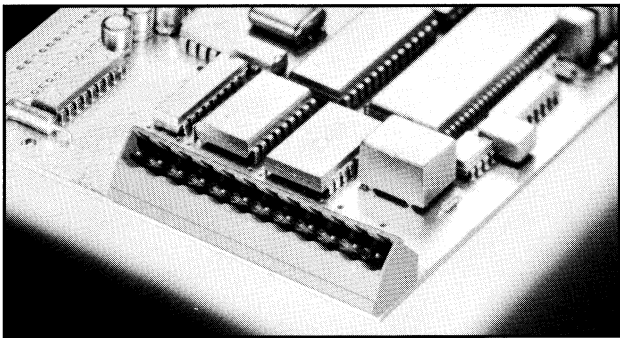


EDSTLZ 990



2-24 poles, Spacing 5.08 mm
insert required no. of poles ••
How to order see page 6

Ratings:

*Approvals pending



UL1059



CSA 22.2 No. 158



DIN VDE 0627

Rated Voltage

250 VB

300 VB

250 V

Rated Current

15 A

16 A

12 A (T60)

Test Voltage

2.21 kV

Dimensions

Spacing

5.08 mm

PCB Hole Diameter

1.4 mm

Materials

Insulating Material

PA

Flammability Class

UL94 V-0

Temperature Range

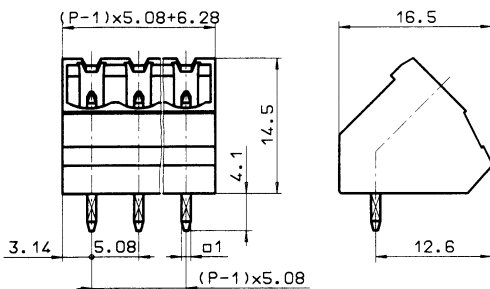
-30°C/+105°C

Contact Pin

Cu

Color

Green



P = No. of Poles